

Community Consultative Committee – February 2025

19 February 2025



WELCOME AND APOLOGIES



Welcome

Apologies

Declaration of interests

Confirmation of previous minutes

AGENDA



- 1. Actions from previous meeting**
- 2. Correspondence**
- 3. Operational update**
- 4. Approvals**
- 5. Business Arising**
- 6. Environmental Incidents / Non-compliances**
- 7. Environmental Performance**
- 8. Community Complaints & Enquiries**
- 9. Environmental Projects**

ACTIONS / BUSINESS ARISING FROM PREVIOUS MINUTES



Action / Business Arising	Action Owner	Update
Nil	-	-

CORRESPONDENCE



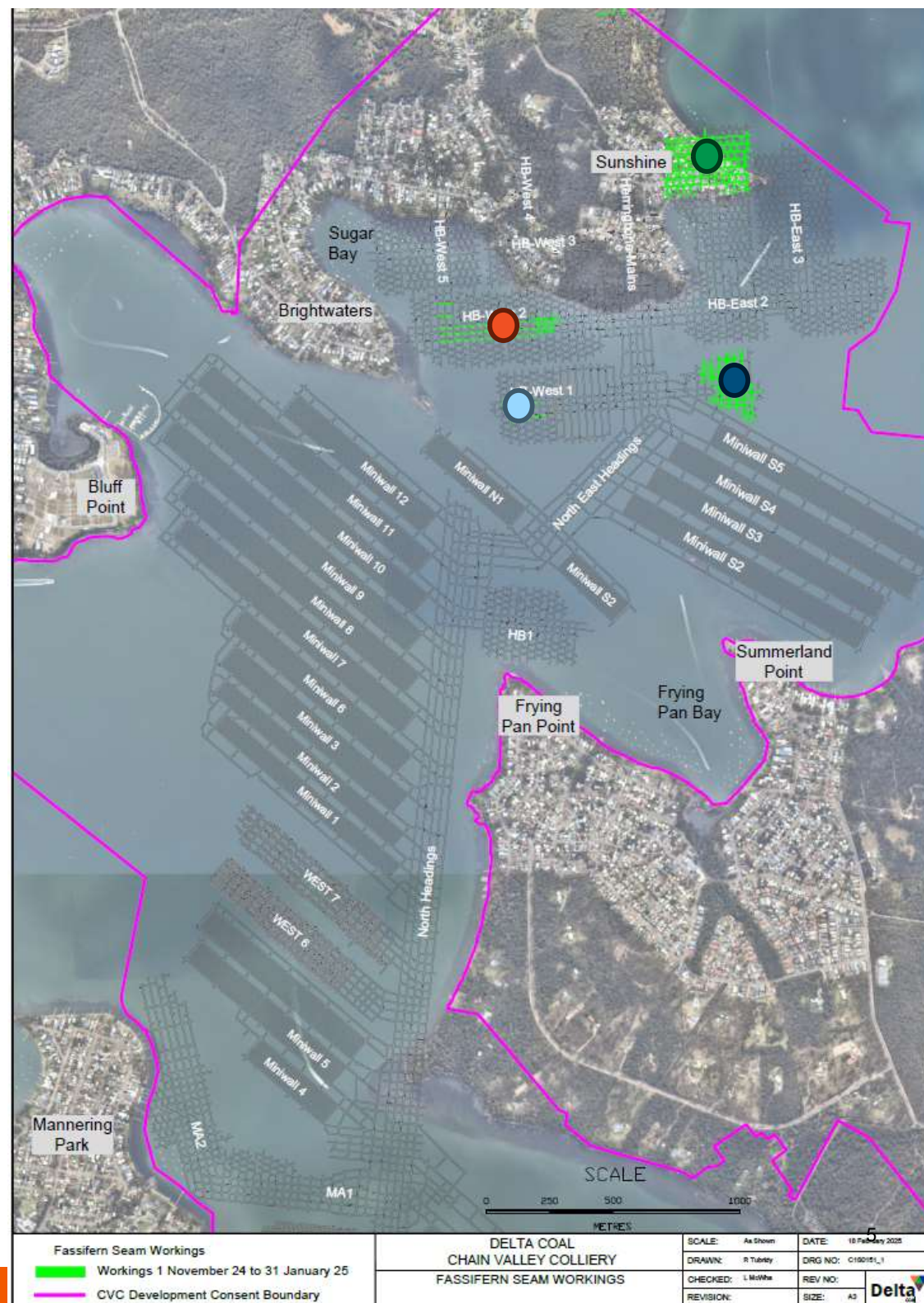
Correspondence since previous meeting

- 26/11/24 – email MMH to CCC final minutes.

OPERATIONAL UPDATE

Production

- Partial secondary extraction in HB-West 2 panel.
- Production in HB-East 1 Panel.
- Production continued in HB-East 4
- Partial secondary extraction in HB-West 1 panel.
- Production 1 Nov 2024 to 31 Jan 2025 was 254,994 t ROM Coal.
- All coal produced delivered to Power Station.



APPROVALS



Current Approvals

Chain Valley Colliery

- EPL 1770: Environmental Protection License - November 2024 (licence variation to remove faecal coliform limits approved by NSW EPA).
- CVC SSD-5465 (MOD 4): Development Consent – August 2021
- Extraction Plan: MWS5 and NPA (Amendment 1, October 2024)

Mannering Colliery

- EPL 191 – Mannering Colliery – June 2023
- Mannering Colliery Project Approval PA 06_0311 (MOD 5) – June 2020

CONSENT CONSOLIDATION PROJECT

- Independent Expert Panel completed assessment of both Greenhouse Gas and Subsidence.
- DPHI issued two RFI's to address recommendations of the subsidence assessment and draft (now current) NSW EPA Greenhouse Gas Assessment guidelines.
- Following this, the Department of Planning, Housing and Infrastructure (DPHI) will prepare their assessment report of the projects Environmental Impact Statement (EIS).
- The project will be referred to the Independent Planning Commission.



State Significant Development

Assessment

Chain Valley Colliery Consolidation Project

Central Coast

Current Status: More Information Required

Interact with the stages for their names ⓘ



Want to stay updated on this project?

Notify me

Stay up to date with the project via
the Planning Portal at the link below

<https://www.planningportal.nsw.gov.au/major-projects/projects/chain-valley-colliery-consolidation-project>

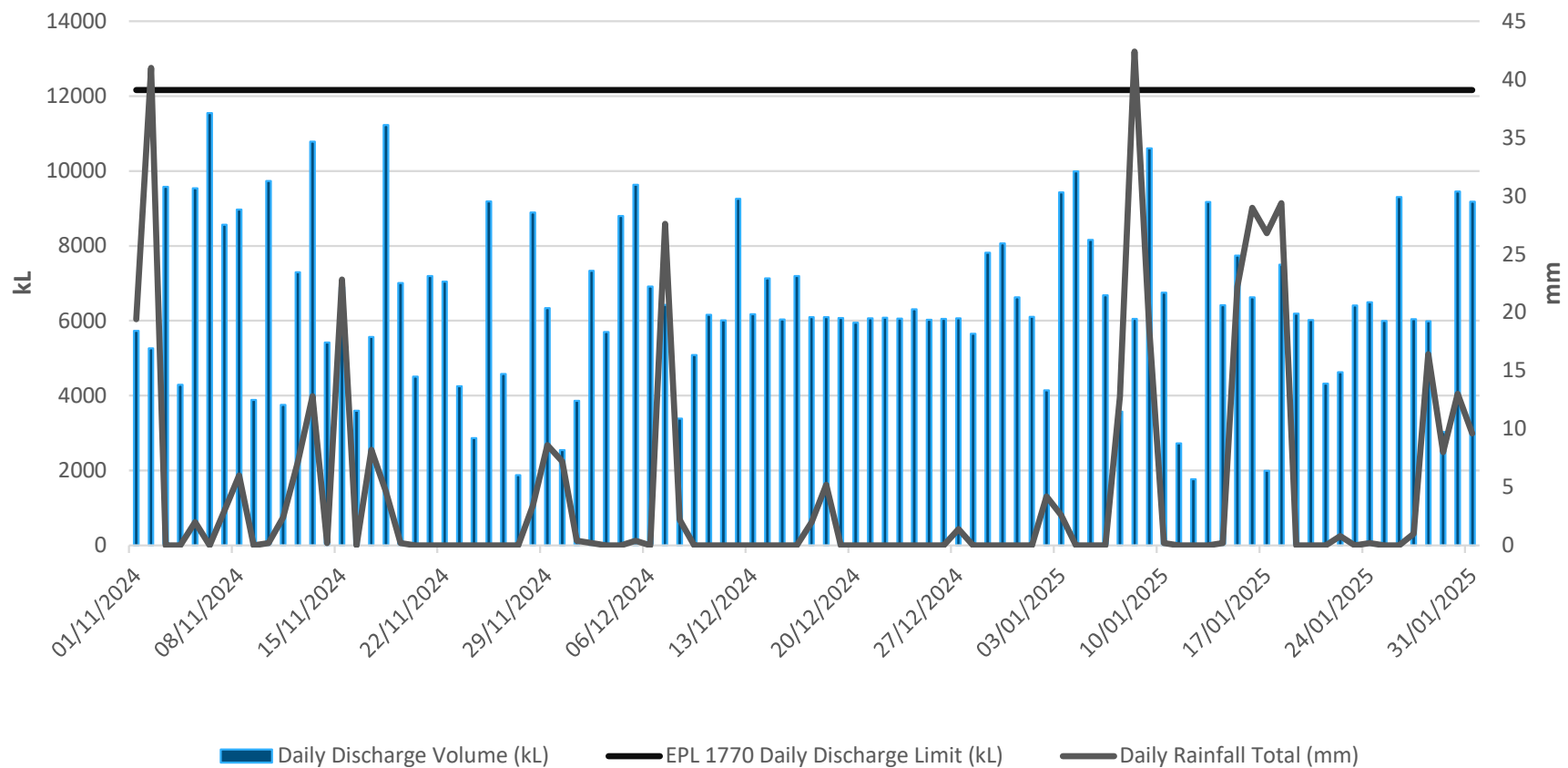
ENVIRONMENTAL INCIDENTS / NON- COMPLIANCES



Site	Date	Type	Details
Chain Valley	2024	Depositional Dust Exceedance	Depositional Dust Gauge DDG004 contaminated by activities unrelated to mine operations (easement activities), exceeding annual average criteria for 2024.

CVC Surface Water Daily Discharge and Rainfall Volumes

CVC LDP1 Discharge
1 November 2024 - 31 January 2025



ENVIRONMENTAL PERFORMANCE



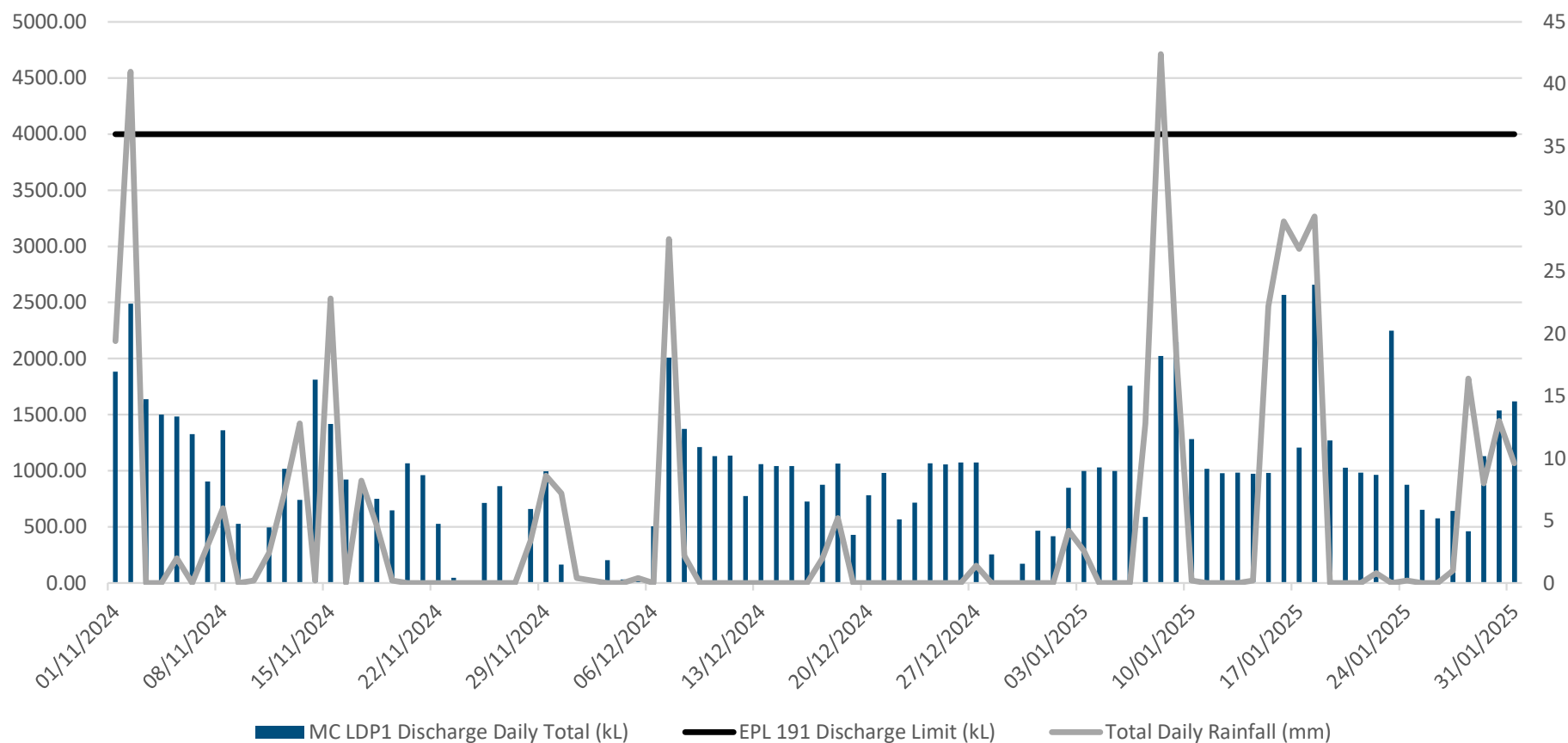
CVC Surface Routine Water Quality Monitoring (LDP1 Monthly)

LDP1	Limits	Nov – 2024	Dec – 2024	Jan - 2025
Faecal Coliforms (CFU/100ml)	200	20	60	N/A
Enterococcus CFU/100ml	40 Primary Contact (NHMRC, 2008 ¹) 150 Secondary Contact (NHMRC, 2008 ¹)	96	170	N/A
pH (pH Units)	6.5-8.5	7.7	7.7	7.8
Total Suspended Solids (mg/L)	50	<5	<5	<5
Oil and Grease (mg/L)	10	<5	<5	<5

¹ National Health and Medical Research Council, *Guidelines for Managing Risks in Recreational Water*, 2008

MC Surface Water Daily Discharge Volume and Rainfall Volumes

MC LDP1 - Surface Water Daily Discharge
1 November 2024 - 31 January 2025



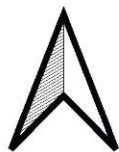
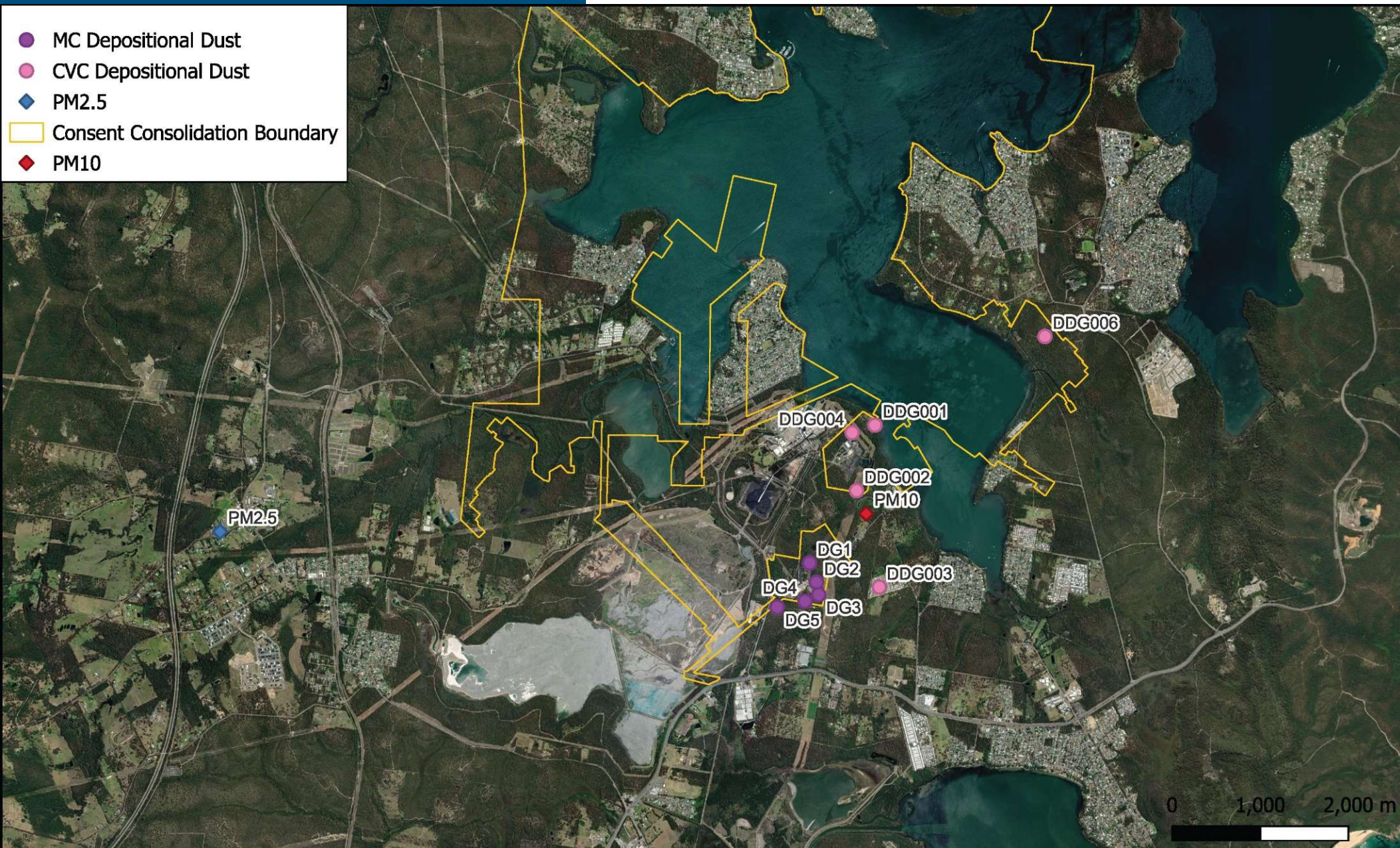
ENVIRONMENTAL PERFORMANCE



MC Surface Water Quality Monitoring

LDP1	Limits	Nov-2024 Average	Dec-2024 Average	Jan-2025 Average
Oil & Grease mg/L	10	<5	<5	<5
TSS mg/L	50	10.75	17.6	12
pH	6.5-8.5	7.8	7.9	7.8

- MC Depositional Dust
- CVC Depositional Dust
- PM2.5
- Consent Consolidation Boundary
- PM10



Delta Coal
Mannering Colliery

Air Quality Monitoring Locations

Date: 12 Nov 2024

Scale: As shown

Drawn: LM

DRG NO: N/A

Checked: -

REV NO: 0

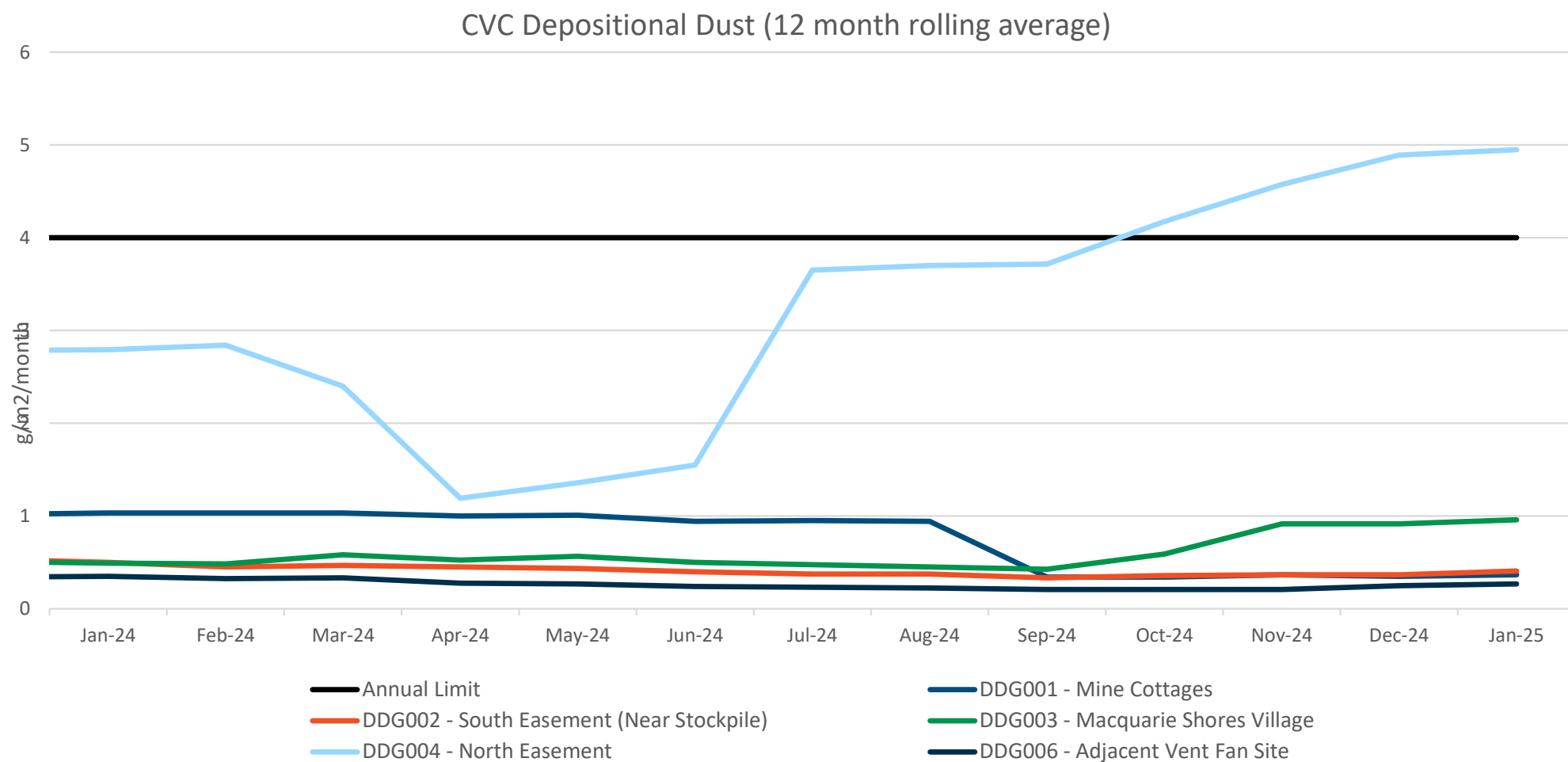
Signed: -

Size: A3

ENVIRONMENTAL PERFORMANCE



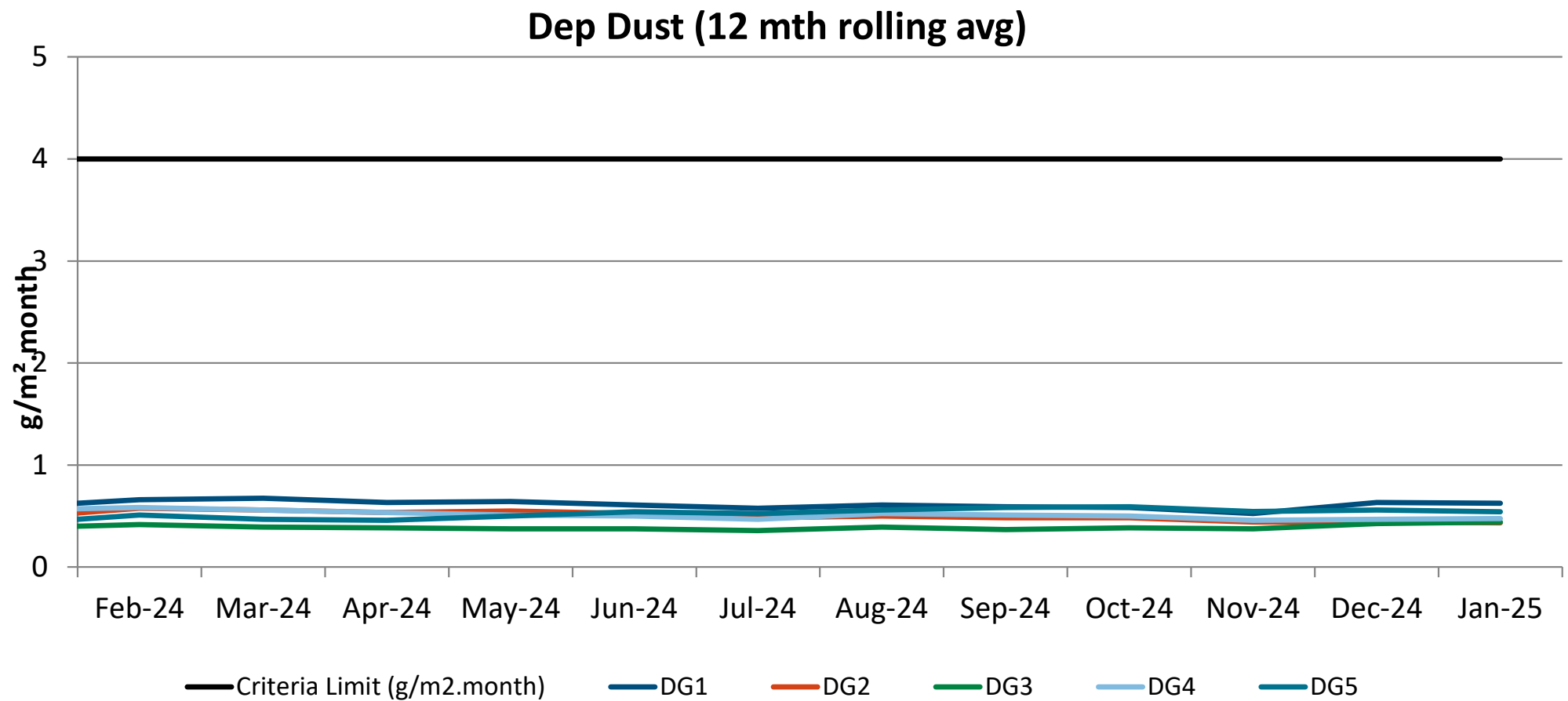
CVC Depositional Dust Monitoring



ENVIRONMENTAL PERFORMANCE



MC Depositional Dust Monitoring

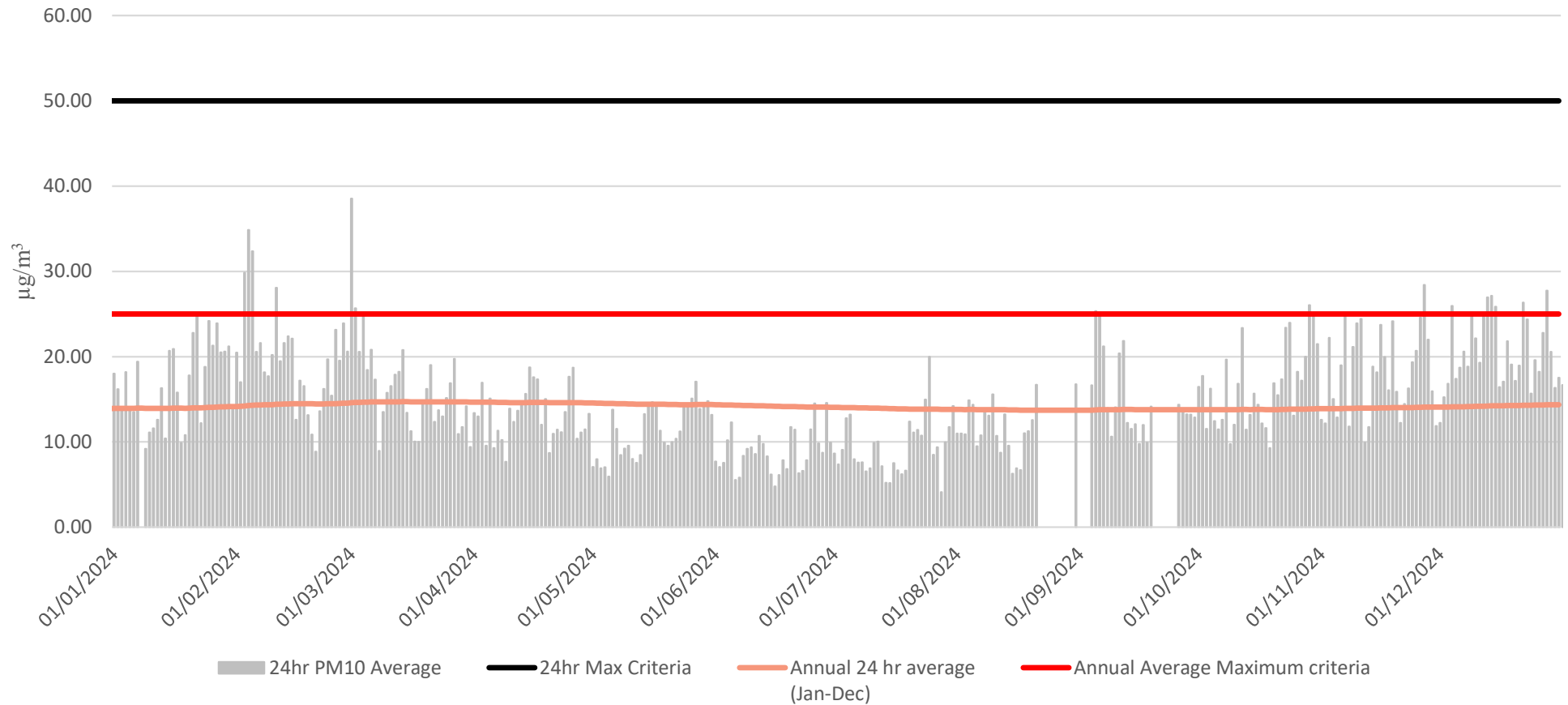


ENVIRONMENTAL PERFORMANCE



PM₁₀ Monitoring

PM10 ($\mu\text{g}/\text{m}^3$) Monitoring (CY2024)

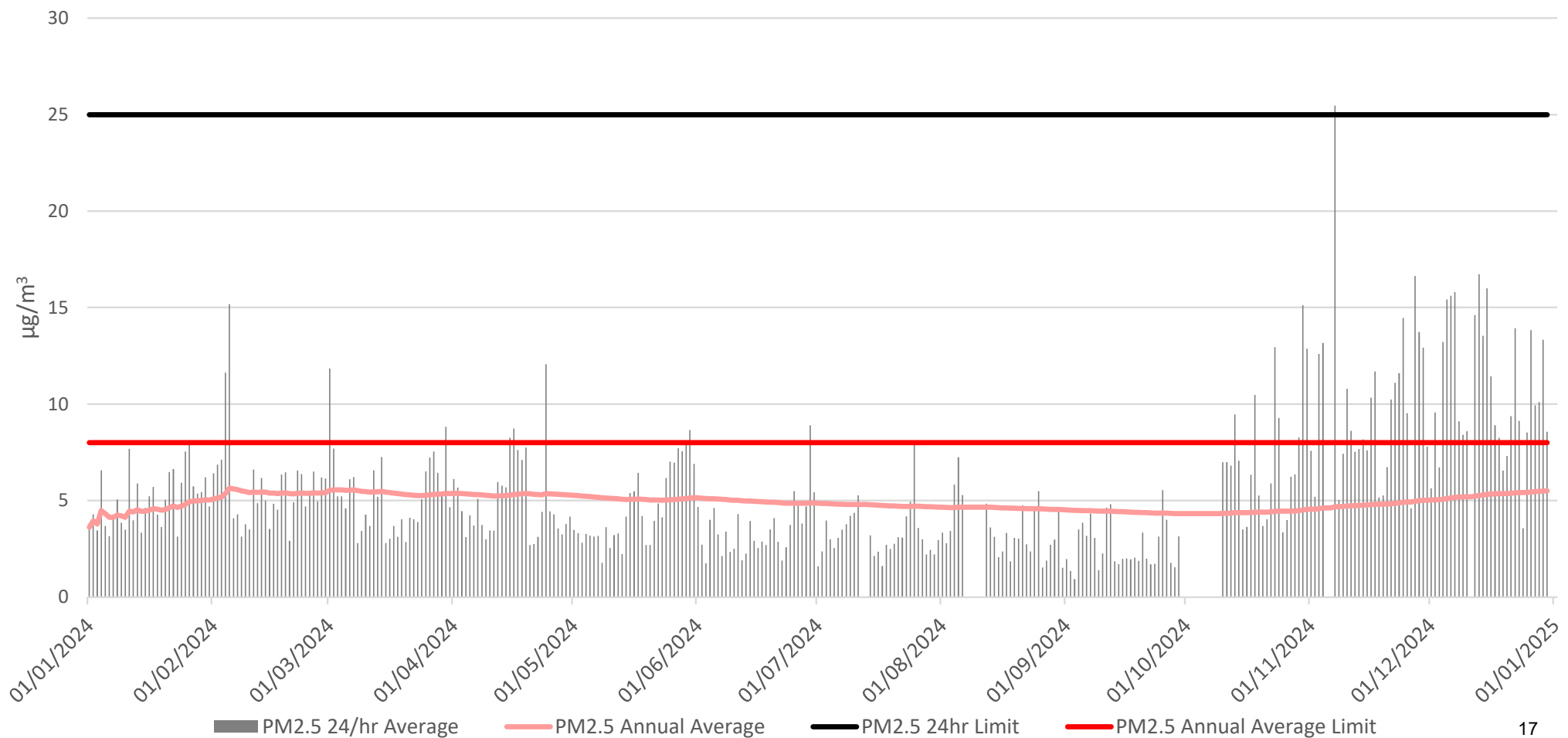


ENVIRONMENTAL PERFORMANCE



PM_{2.5} Monitoring

PM_{2.5} Monitoring - 2024

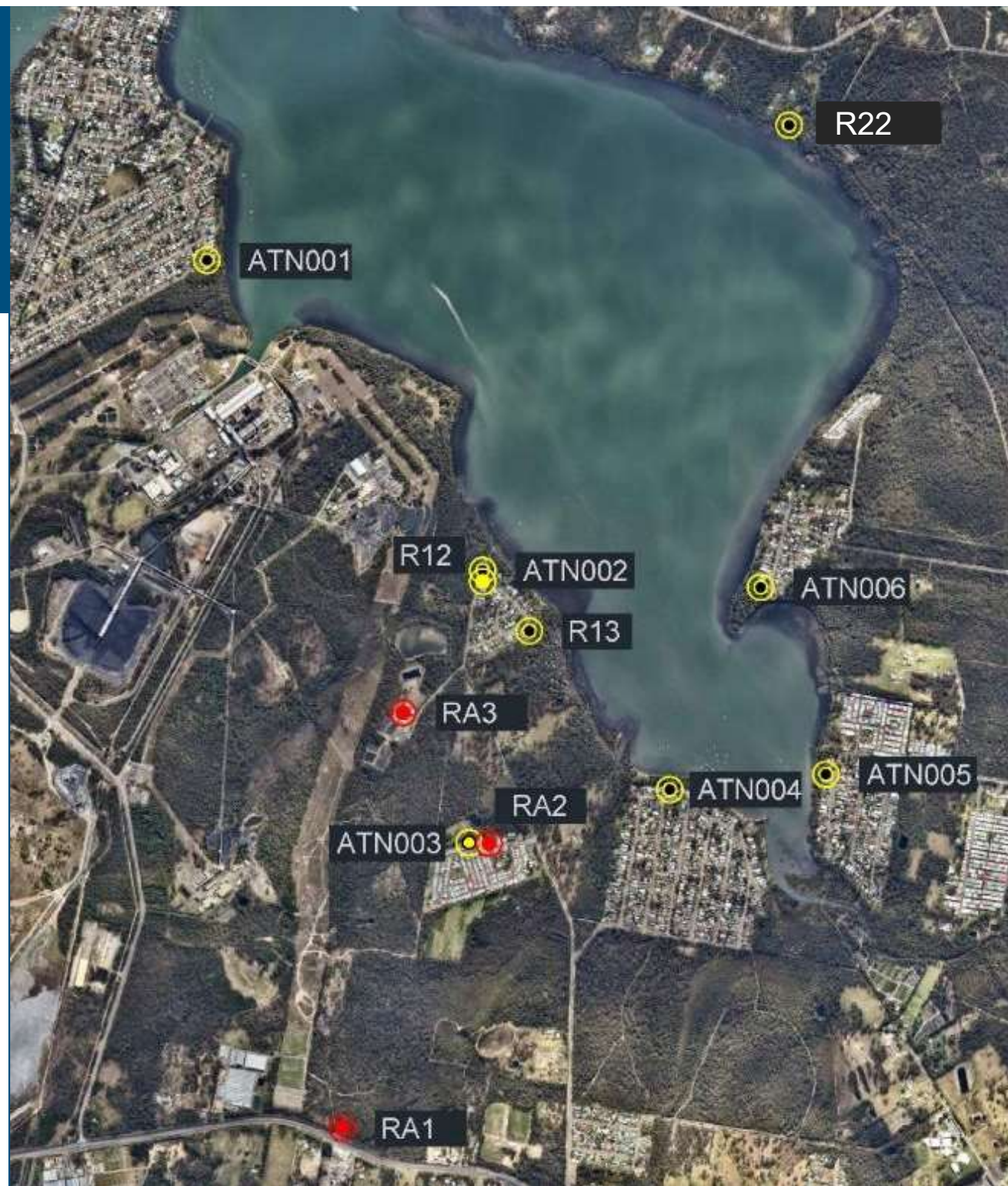


ENVIRONMENTAL PERFORMANCE

Noise Monitoring Locations

Red = MC
Monitoring Location

Yellow = CVC
Monitoring Location



ENVIRONMENTAL PERFORMANCE



Noise Monitoring – CVC

Q4 2024 noise monitoring was undertaken on the 3rd, 4th, 5th, 10th and 11th December 2024.

The highest result for each monitoring location during the monitoring period is presented.

Monitoring Point	Site Contributions, dB		Noise Limit		Compliance Status
	LA _{EQ} (15 min)	LAMAX	LA _{EQ} (15 min)	LAMAX	
Chain Valley Colliery Q4 2024					
ATN001	IA	IA	38	45	☑
ATN002	<30 dB	IA	49	54	☑
ATN003	IA	IA	36	45	☑
ATN004	IA	IA	35	45	☑
ATN005	IA	IA	35	45	☑
ATN006	IA	IA	37	45	☑
R22	44 (39 + 5 LFN)	40	46	46	☑
R12	<30	IA	49	53	☑
R13	<30	IA	43	49	☑

ENVIRONMENTAL PERFORMANCE



Noise Monitoring – MC

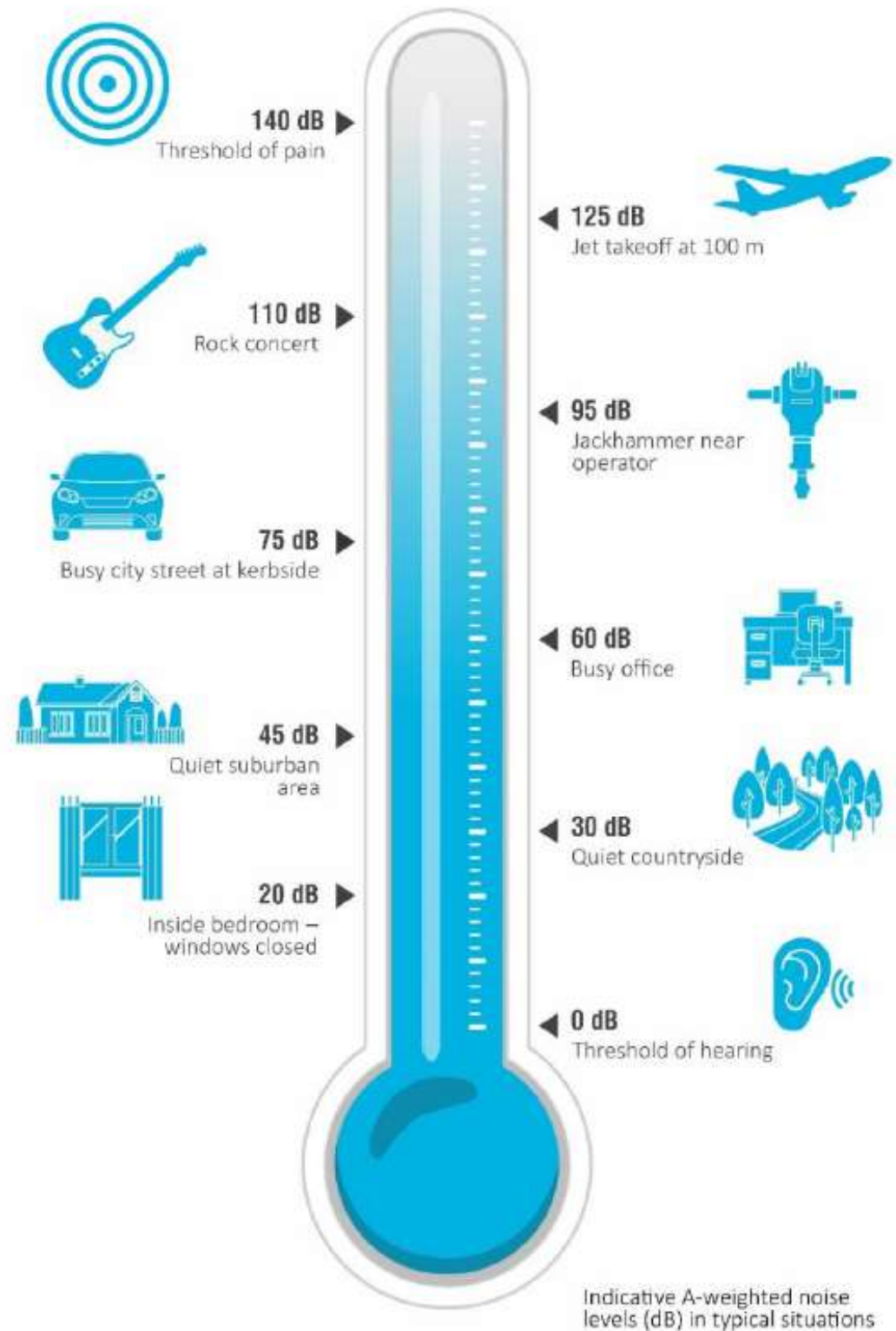
No Exceedances for MC noise monitoring between November 2024 – January 2025.

Highest result recorded during monitoring for a location is presented. Monitoring conducted during Evening (6-10pm) and Night period (10pm onward). IA = Inaudible.

Location	Date	Site Contributions, dB		Noise Limits, dB		Compliance status
		LAEQ	LAMAX	LAEQ	LAMAX	
November 2024						
RA1	19/11/2024	IA	IA	36	46	☑
RA2		IA	IA	40	45	☑
RA3		IA	IA	39	49	☑
December 2024						
RA1	3/12/2024	IA	IA	36	46	☑
RA2		IA	IA	40	45	☑
RA3		IA	IA	39	49	☑
January 2025						
RA1	23/01/2025	IA	IA	36	46	☑
RA2		IA	IA	40	45	☑
RA3		IA	IA	39	49	☑

ENVIRONMENTAL PERFORMANCE

Noise Monitoring Noise Comparison



Community Complaints between 1 November 2024 and 31 January 2025:

- Chain Valley Colliery - Nil community complaints received in period.
- Mannering Colliery - Nil community complaints received in period.

General Enquiries between 1 November 2024 and 31 January 2025 :

- No enquiries received

ENVIRONMENTAL PROJECTS

- Implementation of self-bunded containers for hydrocarbon storage at CVC.
- Continued construction of a perimeter fence at CVC.



Questions?